

# MOTOSEGA 2500C(ZL2500C)



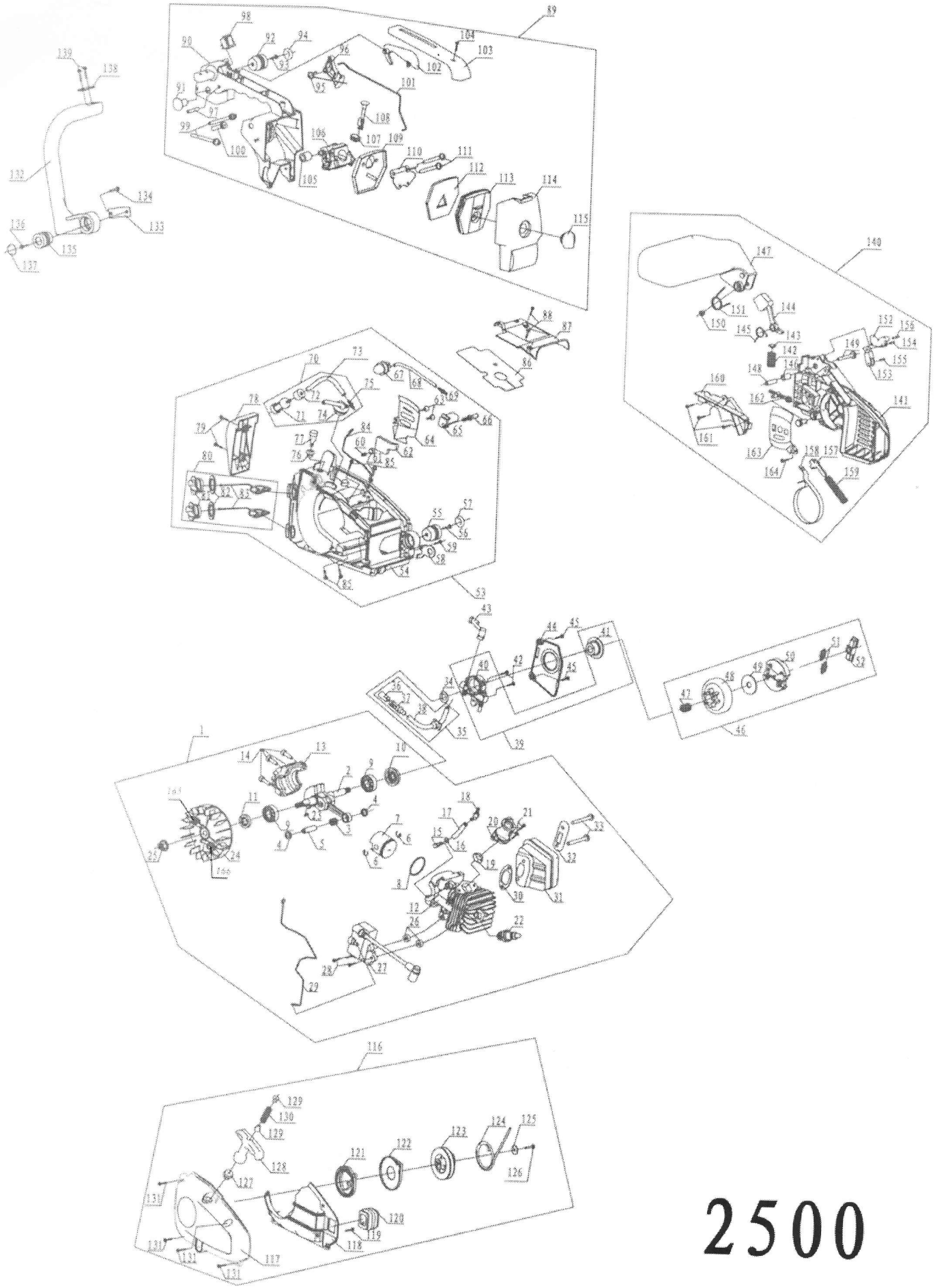
## 10. Dati tecnici

### Motore:

Cilindrata (cm<sup>3</sup>) ..... 25,4  
 Carburante: ..... Miscela (benzina, 50: olio a 2 tempi 1)  
 Capacità serbatoio (ml): ..... 230  
 Olio catena ..... Olio motore SAE 10W-30  
 Capacità serbatoio olio (ml) ..... 160  
 Ceburalore ..... A Dalkarna  
 Accensione ..... Elettronica  
 Candela ..... Champion RCJ-7Y  
 Sgleria lubrificazione ..... Pompa meccanica  
 Dimensioni (Lung x Larg x Alt.) (mm) ..... 265 x 220 x 220  
 Peso a secco ..... 2,8  
**< Barra con rocchetto >**  
 denti ..... 8  
**< Barra Carving >**  
 denti ..... 8

### Organi di taglio:

**< Ruota dentata >**  
 Barra con rocchetto  
 Tipo: ..... a rocchetto  
 Dimensioni (in )(cm) ..... (10)(25)  
**Catena**  
 Tipo: ..... Oregon 91VG  
 Passo (in )(mm) ..... (3/8)(9,4)  
 Gola (in )(mm) ..... (0,050)(1,25)  
**< Naso del duro >**  
 Barra Carving  
 Tipo: ..... Carving  
 Dimensioni (in )(cm) ..... (10)(25)  
**Catena**  
 Tipo: ..... Oregon 25AP  
 Passo (in )(mm) ..... (1/4)(6,25)  
 Gola (in )(mm) ..... (0,050)(1,25)



2500

| JMB | □□□□         | APPELLATION               | QUANTITY | PRICE(USD) |
|-----|--------------|---------------------------|----------|------------|
| 1   | □□□□□        | ENGINE ASSY               | 1        |            |
| 2   | □□□□□□       | CRANK SHAFT ASSY          | 1        |            |
| 3   | □□□□□□       | NEEDLE BEARING-BALL NEED  | 1        |            |
| 4   | □□□□         | RING SNAP                 | 2        |            |
| 5   | □□□          | PISTON-PIN                | 1        |            |
| 6   | □□□□□        | RING-SNAP                 | 2        |            |
| 7   | □□           | PISTON                    | 1        |            |
| 8   | □□□          | PISTON-RING               | 1        |            |
| 9   | 6001□□       | 6001 BEARING-BALL         | 2        |            |
| 10  | □□□12×28×6   | RIGHT OIL RING12×28×6     | 1        |            |
| 11  | □□□12×22×4.5 | LEFT OIL RING12×22×4.5    | 1        |            |
| 12  | □□□          | CYLINDER                  | 1        |            |
| 13  | □□□          | SUPPORT-CYLINDER          | 1        |            |
| 14  | □□M5×20      | SCREW M5x20               | 4        |            |
| 15  | □□□          | HOSE-PULSE                | 1        |            |
| 16  | □□□□□□       | RING-SNAP                 | 1        |            |
| 17  | □□□□3x7x55   | HOSE OILφ3xφ7x55          | 1        |            |
| 18  | □□□□□□       | CORNER JOINT              | 1        |            |
| 19  | □□□□□        | COPPER SHEATHING-INLET PI | 1        |            |
| 20  | □□□          | HOSE-AIR                  | 1        |            |
| 21  | □□M4x14      | SCREW M4x14               | 2        |            |
| 22  | □□□          | SPARK PLUG                | 1        |            |
| 23  | □□□3x10      | WOODRUFF KEY3x10          | 1        |            |
| 24  | □□           | SPROCKET-ASSY             | 1        |            |
| 25  | □□M8×1       | NUT M8x1                  | 1        |            |
| 26  | □□□□□        | PAD-ELECTRIC IGNITION     | 2        |            |
| 27  | □□□          | ELECTRIC IGNITION         | 1        |            |
| 28  | □□M4x14      | SCREW M4x14               | 2        |            |
| 29  | □□□□         | WIRE-STOP                 | 1        |            |
| 30  | □□□□□□       | WASHER MUFFLER            | 1        |            |
| 31  | □□□          | MUFFLER                   | 1        |            |
| 32  | □□□□□        | SHIELD-MUFFLER            | 1        |            |
| 33  | □□M5×44      | SCREW M5x44               | 2        |            |
| 34  | □□□□□        | WASHER-OIL PUMP           | 1        |            |
| 35  | □□□□□        | OIL FILTER -ASSY          | 1        |            |
| 37  | □□□□         | OIL FILTER                | 1        |            |
| 38  | □□□□□□□      | SUPPORT-HOSE CHAIN OIL    | 1        |            |
| 39  | □□□□□        | OIL PUMP-ASSY             | 1        |            |
| 40  | □□□          | OIL PUMP                  | 1        |            |
| 41  | □□□□□        | GEAR WORM                 | 1        |            |
| 42  | □□M4x14      | SCREW M4x14               | 2        |            |
| 43  | □□□□□□       | HOSE-CHAIN OIL OUTGOING   | 1        |            |
| 44  | □□□□□        | COVER-OIL PUMP            | 1        |            |
| 45  | □□ST4.2x13   | SCREW ST4.2x13            | 2        |            |
| 46  | □□□□□        | DRUM CLUTCH ASSY          |          |            |
| 47  | □□□□□        | BEARING-BALL              | 1        |            |
| 48  | □□□□□        | COVER-DRUM CLUTCH         | 1        |            |
| 49  | □□□□□        | WASHER-DRUM CLUTCH        | 1        |            |
| 50  | □□           | CLUTCH SUPPORT            | 2        |            |
| 51  | □□□□□        | SPRING-DRUM CLUTCH        | 1        |            |
| 52  | □□□          | CLUTCH RETAINER           | 1        |            |
| 53  | □□□□         | CRANK CASE ASSY           | 1        |            |
| 54  | □□           | CRANK CASE                | 1        |            |
| 55  | □□□          | PAD-RUBBER                | 3        |            |
| 56  | □□ST4.8x13   | SCREW ST4.8x13            | 1        |            |
| 57  | □□□          | PLUG-PAD                  | 3        |            |
| 58  | □□           | POTHHOOK                  | 1        |            |
| 59  | □□ST4.2x13   | SCREW ST4.2x13            | 1        |            |
| 60  | □□□□□□       | VALVE-VENT                | 1        |            |
| 61  | □□□□□□□      | FOAM CHOCK                | 1        |            |
| 62  | □□□□□□       | SPONGE-WASHER GUIDE BAR   | 1        |            |

|     |                   |                        |   |  |
|-----|-------------------|------------------------|---|--|
| 63  | □□ST4.2×11        | SCREW ST4.2×11         | 2 |  |
| 64  | □□□□              | PLATE-BAR              | 1 |  |
| 65  | □□□               | CHAIN CATCHER          | 1 |  |
| 66  | □□ST5.5×15        | SCREW ST5.5×15         | 3 |  |
| 67  | □□□□□             | OIL VACUOLE-CARBURETOR | 1 |  |
| 68  | □□□2.5x4.5x110□0□ | HOSE CHAIN OIL         | 1 |  |
| 69  | □□□□              | TIE-IN-HOSE OIL        | 2 |  |
| 70  | □□□□□             | FILTER ASSY            | 1 |  |
| 71  | □□□               | FILTER                 | 1 |  |
| 72  | □□                | CLUMP WEIGHT           | 1 |  |
| 73  | □□□2.5×4.5×170□0□ | HOSE OIL               | 1 |  |
| 74  | □□□□              | SUPPORT-HOSE OIL       | 1 |  |
| 75  | □□□□              | TIE-IN-HOSE OIL        | 2 |  |
| 76  | □□□□              | SUPPORT-BALANCE        | 1 |  |
| 77  | □□□□□             | RUBBER-BALANCE         | 1 |  |
| 78  | □□□               | STOP                   | 1 |  |
| 79  | □□ST4.2x16        | SCREW ST4.2x16         | 2 |  |
| 80  | □□□□□□            | COVER-FUEL OIL ASSY    | 1 |  |
| 81  | □□□□              | COVER-FUEL OIL         | 2 |  |
| 82  | □□□□□□□□          | GASKET-FUEL CAP        | 2 |  |
| 83  | □□□□□□□           | SUPPORT-COVER FUEL OIL | 2 |  |
| 84  | □□□               | WIRE-GROUND            | 1 |  |
| 85  | □□□□□□□□□□M5×14   | SCREW M5x14            | 4 |  |
| 86  | □□□□              | PAPER GASKET           | 1 |  |
| 87  | □□                | COVER-TOP              | 1 |  |
| 88  | □□□□□□□□ST4.2x16  | SCREW ST4.2x16         | 2 |  |
| 89  | □□□□□             | REAR HANDLE ASSY       | 1 |  |
| 90  | □□□               | REAR HANDLE            | 1 |  |
| 91  | □□□□□             | WASHER-REAR HANDLE     | 1 |  |
| 92  | □□□               | PAD-RUBBER             | 3 |  |
| 93  | □□ST4.8x19        | SCREW ST4.8x19         | 1 |  |
| 94  | □□□               | PLUG-PAD               | 3 |  |
| 95  | □□□□              | SPRING-TRIGGER         | 1 |  |
| 96  | □□                | TRIGGER                | 1 |  |
| 97  | □□□5×25           | COTTER PIN5×25         | 1 |  |
| 98  | □□□□              | SWITCH STOP            | 1 |  |
| 99  | □□□□□□            | HOSE OIL CARBURETOR    | 2 |  |
| 100 | □□□□□□□□          | HOSE PULSE-CARBURETOR  | 1 |  |
| 101 | □□□□              | ROD THROTTLE           | 1 |  |
| 102 | □□□□□             | LEVER-SAFETY TRIGGER   | 1 |  |
| 103 | □□□               | COVER-REAR HANDLE      | 1 |  |
| 104 | □□ST4.2x16        | SCREW ST4.2x16         | 1 |  |
| 105 | □□□□□             | SPONGE-CARBURETOR      |   |  |
| 106 | □□□               | CARBURETOR             | 1 |  |
| 107 | □□□□□             | GROMMET-CHOKE KNOB     | 1 |  |
| 108 | □□□□              | CHOKE KNOB             | 1 |  |
| 109 | □□□□□             | AIR FILTER -A          | 1 |  |
| 110 | □□□□□             | COVER-AIR FILTER       | 1 |  |
| 111 | □□M5×44           | SCREW M5x44            | 2 |  |
| 112 | □□□□□□            | SPONGE-AIR FILTER      |   |  |
| 113 | □□□□□             | AIR FILTER -B          | 1 |  |
| 114 | □□□□□             | COVER-AIR FILTER       | 1 |  |
| 115 | □□□□              | KNOB-AIR FILTER        | 1 |  |
| 116 | □□□□□             | STARTER ASSY           | 1 |  |
| 117 | □□□□              | HOUSING-STARTER        | 1 |  |
| 118 | □□□               | BAFFLE-FAN             | 1 |  |
| 119 | □□ST4.2x13        | SCREW ST4.2x13         | 1 |  |
| 120 | □□□□              | SUPPORT-HOSE AIR       | 1 |  |
| 121 | □□□□              | SPRING-STARTER         | 1 |  |
| 122 | □□□□              | COVER-SPRING           | 1 |  |
| 123 | □□□               | PULLEY-STARTER         | 1 |  |
| 124 | □□                | ROPE-STARTER           | 1 |  |
| 125 | GB/T96□□5□5×16□   | GB/T96WASHER5□5×16□    | 1 |  |
| 126 | □□ST4.8x13        | SCREW ST4.8x13         | 1 |  |

|     |            |                         |   |  |
|-----|------------|-------------------------|---|--|
| 127 | □□□□       | GUIDE BUSH-ROPE         | 1 |  |
| 128 | □□□□       | HANDLE-STARTER          | 1 |  |
| 129 | □□□        | SPRING CAP              | 2 |  |
| 130 | □□□□       | RECOIL SPRING           | 1 |  |
| 131 | □□ST4.2x16 | SCREW ST4.2x16          | 4 |  |
| 132 | □□         | HANDLE-FRONT            | 1 |  |
| 133 | □□□        | NYLON TAPE              | 1 |  |
| 134 | □□ST4.8x13 | SCREW ST4.8x13          | 1 |  |
| 135 | □□□        | PAD-RUBBER              | 3 |  |
| 136 | □□ST4.8x16 | SCREW ST4.8x16          | 1 |  |
| 137 | □□□        | PLUG-PAD                | 3 |  |
| 138 | □□□□       | WASHER-FRONT HANDLE     | 1 |  |
| 140 | □□□□       | CHAIN BRAKE ASSY        | 1 |  |
| 141 | □□□        | BRAKE HOUSING ASSY      | 1 |  |
| 142 | □□□□□      | COMPRESS SPRING-LEVERAG | 1 |  |
| 143 | □□□        | SUPPORT SPRING          | 1 |  |
| 144 | □□         | LEVERAGE-BRAKE          | 1 |  |
| 145 | □□□□       | SPRING-LEVERAGE         | 1 |  |
| 146 | □□□□       | PIN-LEVERAGE            | 1 |  |
| 147 | □□□        | LEVERAGE                | 1 |  |
| 148 | □□□□□      | PIN LEVERAGE            | 1 |  |
| 149 | □□M5x30    | SCREW M5x30             | 1 |  |
| 150 | □□□□□M5    | NUT M5                  | 1 |  |
| 151 | □□□□□      | TORSION SPRING-LEVERAGE | 1 |  |
| 152 | □□□        | PUSHER-SPRING(BARKE)B   | 1 |  |
| 153 | □□□        | PUSHER-SPRING(BARKE)A   | 1 |  |
| 154 | □□□3×9     | STRAIGHT PIN3×9         | 1 |  |
| 55  | □□□3×9     | STRAIGHT PIN3×9         | 1 |  |
| 156 | □□□3×14    | STRAIGHT PIN3×14        | 1 |  |
| 157 | □□□        | PLATE-BRAKE             | 1 |  |
| 158 | □□□        | BAND BRAKE              | 1 |  |
| 159 | □□□□       | SPRING-ACTUATION        | 1 |  |
| 160 | □□□□□□     | COVER-CHAIN BRAKE       | 1 |  |
| 161 | □□ST4.2x13 | SCREW ST4.2x13          | 3 |  |
| 162 | □□□□       | TENSIONER               | 1 |  |
| 163 | □□□□       | PLATE-BAR               | 1 |  |
| 164 | □□ST4.2x13 | SCREW ST4.2x13          | 3 |  |
| 165 | □□         | PAWL-STARTER            | 2 |  |
| 166 | □□         | SPRING-PAWL             | 2 |  |
|     | □□ 12"     |                         | 1 |  |
|     | □□□□       |                         | 1 |  |
|     | □□ 12"     |                         | 1 |  |
|     |            |                         | 1 |  |