

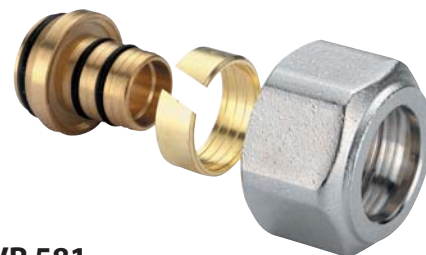
Adattatori universali a compressione per tubi multistrato e polietilene reticolato PEX, nichelati - Nichelato

Adapters for multilayer pipe and cross-linked polyethylene pipe PEX, nickel plated - Nickel plated

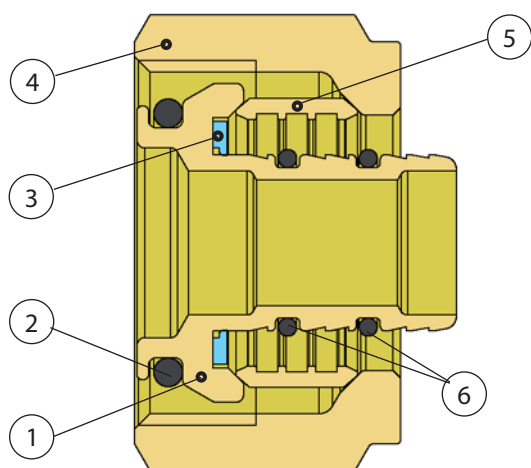
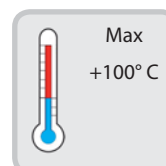
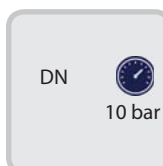
Universal-Adaptern-Zwischenstücke für Mehrschichtrohren und aus vernetztem und vernickeltem

Adaptateurs universels à compression pour tubes multicouche et polyéthylène réticulé PEX - nickelés - Niklé

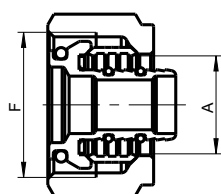
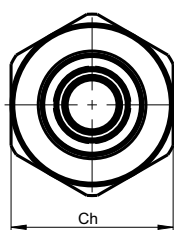
Адаптеры для металлопластиковой трубы и для труб из сшитого полиэтилена PEX, никелированные



IVR 581



N	DENOMINAZIONE PART NAME	MATERIALE MATERIAL	TRATTAMENTO TREATMENT
1	Corpo - Body	Ottone - Brass CW 614N - UNI EN 12164/98	
2	O Ring	EPDM	
3	Ranella - Washer	PE-HD	
4	Calotta - Nut	Ottone - Brass CW 617N - UNI EN 12165/98	Nichelato Nickel plated
5	Bicono - Olive	Ottone - Brass CW 614N - UNI EN 12164/98	
6	O Ring	EPDM	



Size	Code	F	A	A	Ch
16 X 14 X 2	158105143	1/2"	14	14	24
16 X 15 X 2.25	158105156	1/2"	15	15	24
16 X 16 X 2	158105163	1/2"	16	16	24
16 X 16 X 2.25	158105164	1/2"	16	16	24
18 X 14 X 2	158124141	24-19	14	14	27
18 X 16 X 2	158124163	24-19	16	16	27
18 X 16 X 2.25	158124162	24-19	16	16	27
18 X 17 X 2	158124171	24-19	17	17	27
18 X 18 X 2	158124181	24-19	18	18	27
18 X 20 X 2	158124201	24-19	20	20	27
3/4" Eur X 14 X 2	158107141	3/4"	14	14	30
3/4" Eur X 16 X 2	158107163	3/4"	16	16	30
3/4" Eur X 17 X 2	158107171	3/4"	17	17	30
3/4" Eur X 18 X 2	158107181	3/4"	18	18	30
3/4" Eur X 20 X 2	158107203	3/4"	20	20	30
1" Eur X 20 X 2	158110203	1"	20	20	35
1" Eur X 25 X 2.3	158110255	1"	25	25	35
1" Eur X 25 X 2.5	158110256	1"	25	25	35
1" Eur X 26 X 3	158110268	1"	26	26	35

Tagliare sempre il tubo con l'apposito tagliatubi, in caso contrario procedere ad una accurata sbavatura prima di montare l'adattatore  
 Cut the pipe with the appropriate tool, otherwise it is necessary to remove carefully any remaining trimming  
 Das Rohr stets mit einem geeigneten Rohrschneider schneiden. Notfalls vor Montage den Grat am Rohr entfernen  
 Couper toujours le tube avec le coupe-tube, dans le case contraire réaliser une ébarbage avant assembler l'adapteur