

# Blueseal 16



## Raccordi a compressione

Compression fittings

Raccords à compression

Accesorios compresión



## Scheda tecnica

Technical features | Fiche technique | Ficha técnica

CODE  
B 100



**Raccordo  
femmina**

**Female  
adaptor**

**Raccord  
taraudé**

**Empalme  
hembra**

Ghiera **[PP]**  
Anello di  
aggraffaggio **[POM]**  
Anello  
Blueseal **[PP]**  
Guarnizione  
Blueseal **[NBR]**  
Corpo **[PP]**

Nut **[PP]**  
Grip  
ring **[POM]**  
Spacer ring  
Blueseal **[PP]**  
Gasket  
Blueseal **[NBR]**  
Body **[PP]**

Ecrou **[PP]**  
Bague  
d'agrafage **[POM]**  
Douille de  
poussée **[PP]**  
Joint  
Blueseal **[NBR]**  
Corp **[PP]**

Tuerca **[PP]**  
Cono de  
fijación **[POM]**  
Anillo prensa  
junta **[PP]**  
Junta  
Blueseal **[NBR]**  
Cuerpo **[PP]**



CODE: B 100

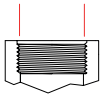
**Blueseal16**

## Raccordo femmina

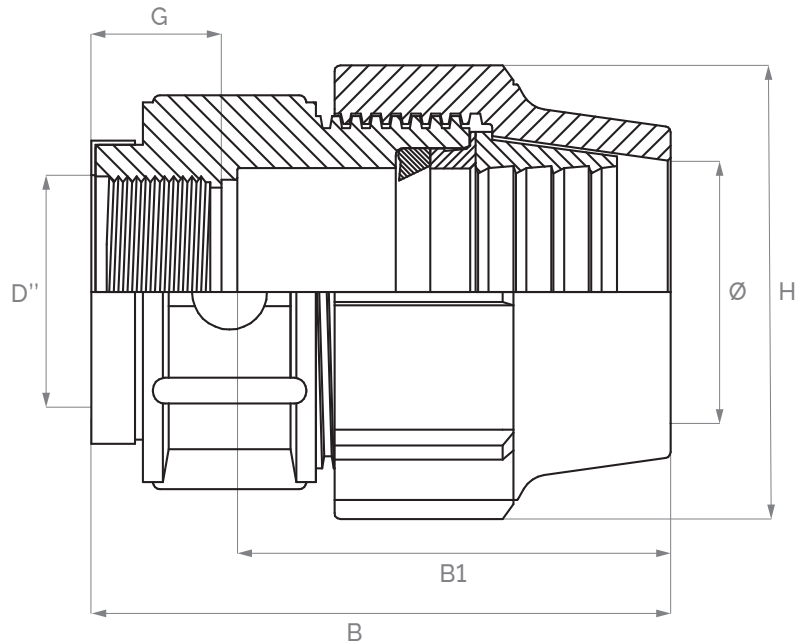
Female adaptor  
Raccord taraudé  
Empalme hembra



### Female threads



ISO 7/1 Parallel



Code	Size (mm)	PN	Dimensions (mm)				Weight
Code	Ø x D''	bar	B	H	B1	G	gr
O10001600BA	16 x ½"	16	68	39	48	15	30
O10001600CA	16 x ¾"	16	73	39	48	19	33
B10002000BA	20 x ½"	16	74	47	56	15	45
B10002000CA	20 x ¾"	16	82	47	63	19	51
B10002500BA	25 x ½"	16	75	54	60	15	56
B10002500CA	25 x ¾"	16	82	54	60	22	62
B10002500DA	25 x 1"	16	82	54	60	20	65
B10003200BA	32 x ½"	16	85	65	68	12	92
B10003200CA	32 x ¾"	16	85	65	68	19	94
B10003200DA	32 x 1"	16	86	65	63	20	96
B10003200EA	32 x 1¼"	16	95	65	63	22	106
B10004000DA	40 x 1"	16	97	83	72	19	166
B10004000EA	40 x 1¼"	16	100	83	72	22	168
B10004000FA	40 x 1½"	16	109	83	72	23	198
B10005000EA	50 x 1¼"	16	117	97	89	24	280

• Anello di rinforzo (inox AISI 430) da 1" ½ a 4" | Reinforcing ring (stainless steel AISI 430) from 1" ½ to 4"

• Ø16 disponibile con guarnizione o-ring | Ø16 available with o-ring gasket

Normative | Standards | Normes | Normas

UNI9561 | AS/NZS4129 | BRL-K 17105 | DVGW GW 335-B3 | ISO17885 | UNI EN 10226-1 (ISO 7/1)



CODE: B 100

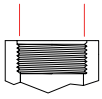
**Blueseal16**

## Raccordo femmina

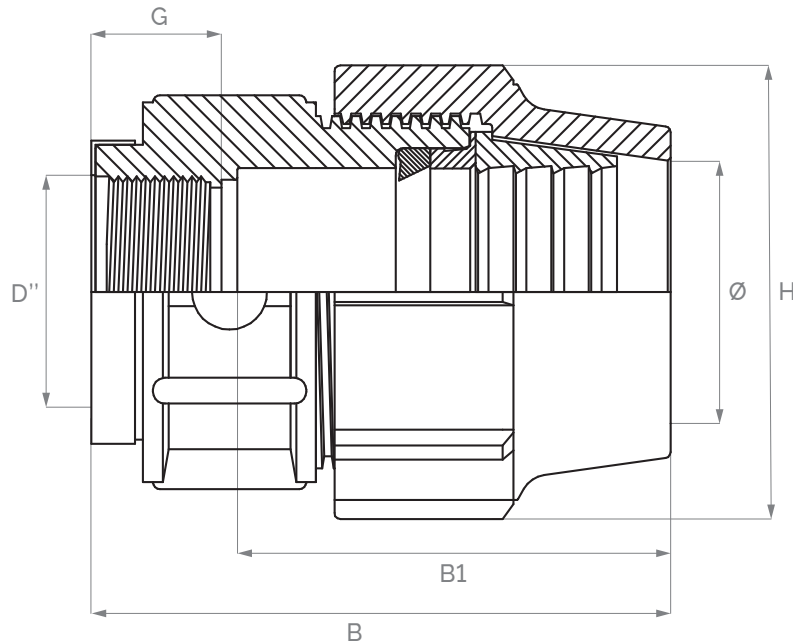
Female adaptor  
Raccord taraudé  
Empalme hembra



### Female threads



ISO 7/1 Parallel



Code	Size (mm)	PN	Dimensions (mm)				Weight
Code	Ø x D''	bar	B	H	B1	G	gr
B10005000FA	50 x 1½"	16	117	97	86	23	286
B10005000GA	50 x 2"	16	131	97	86	25	309
B10006300FA	63 x 1½"	16	142	114	121	23	467
B10006300GA	63 x 2"	16	142	114	113	26	463
B10006300IA	63 x 2½"	16	163	114	108	28	257
B10007500GA	75 x 2"	10	154	133	120	25	674
B10007500IA	75 x 2½"	10	154	133	118	28	661
B10007500LA	75 x 3"	10	178	133	120	33	746
B10009000GA	90 x 2"	10	178	154	147	26	1010
B10009000IA	90 x 2½"	10	184	154	147	31	1030
B10009000LA	90 x 3"	10	188	154	147	33	1020
B10009000MA	90 x 4"	10	205	154	147	38	1122
B10011000GA	110 x 2"	10	231	184	186	28	1640
B10011000LA	110 x 3"	10	225	184	186	33	1643
B10011000MA	110 x 4"	10	234	184	187	38	1650

• Anello di rinforzo (inox AISI 430) da 1" ½ a 4" | Reinforcing ring (stainless steel AISI 430) from 1" ½ to 4"

• Ø16 disponibile con guarnizione o-ring | Ø16 available with o-ring gasket

Normative | Standards | Normes | Normas

UNI9561 | AS/NZS4129 | BRL-K 17105 | DVGW GW 335-B3 | ISO17885 | UNI EN 10226-1 (ISO 7/1)